

Dave Chesler

U.S. Soccer Federation

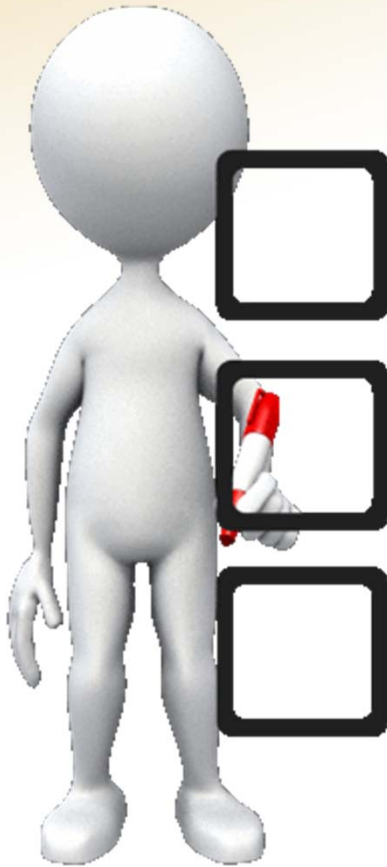
USYOUTHSOCCER.ORG





U.S. SOCCER FEDERATION

## **OBJECTIVES: Team Technical Analysis**



**WHY ANALYZE YOUR TEAM?**

**PRINCIPLES?**

**TECHNIQUES & TOOLS?**

# TARGET #1: WHY





# TEAM TECHNICAL ANALYSIS...WHY?

JAPAN (2) v Korea Republic (1)		DATE: 12-AUG, 2009		TEAM: JAPAN	
2009 AFC U19 WOMEN'S CHAMPIONSHIP		TECH STAFF: D. CHESLER			

<p><b>1- YAMANE</b></p> <p>Right-footed          (+) Outstanding Height &gt;6', slight build          (-) Goal-kicks less than half-line          (-) Lacks confidence &amp; ability w/ pass-back &amp; clearances. (several poor clearances)</p>		<p><b>23- SAITO</b></p>		<p><b>4- SAKURAMOTO</b></p>		<p><b>5- KUMAGA (c)</b></p>		<p><b>3- TAKEYAMA (32)</b></p>	
<p><b>26- KAMEOKA (18)</b></p>		<p><b>6- FUJITA</b></p>		<p><b>9- YASUMOTO</b></p>		<p><b>27- OBARA</b></p>		<p><b>GOALKEEPERS:</b>          Excellent height... Technically... most shots/cross...</p>	

<p><b>TEAM ATTACK PATTERNS:</b></p> <p>+Exceptional movement in all field.          +Primary build-up is through combinations through...          +Goal strength...          +... on the ground... ball at...          +Excellent patience... session until...          +serve quality passes... street of strikers.</p>		<p><b>TEAM DEFENDING SYSTEM:</b></p> <p>4 backs zone across the width of the field.          quality, disciplined &amp; well-coordinated movement...          shift &amp; press the ball.          All 10 field players behind the...          possession is lost in the opponent...          that is focused on high numbers...</p>		<p><b>GOALKEEPERS:</b>          Excellent height... Technically... most shots/cross...          &amp; anticipates play...          ing positions...          -ent tackler...          o strikers. Quality...          strong challenge in...</p>	
<p><b>ESSENTIAL PLAYERS:</b></p> <p>#... - IWABUCHI is cre...          the... Tactical aware...          &amp; her... greatly exceeds...          this compe...          #9: Flank M... influential penetrating on...          the dribble. #1... ambitious deep, wide...          runs w/o the ball.          #4 &amp; #5: Cent. def.+athlet...</p>		<p><b>DEFENDERS:</b>          ...-footed. Migrated between left back...          a def. mf. Always joins back 3 when ball is...          on opposite flank.          6          9          11 Mobile, + penetrating runs without the...          ball. (#2, #5 move forward in support)</p>		<p><b>FORWARDS:</b></p> <p>10 Exceptional quickness &amp; individual...          with the ball. Game awareness...          speed are exceptional - create...          goal-scoring opportunities...          possession of the ball.</p>	

<p>GOALS:</p> <p>(63') #9 Yasumoto (JPN)          (69') #10 Ji So Yun (KOR)          (87') #10 Iwabuchi (JPN)</p>		<p>GENERAL COMMENTS: Physical/Aggression= 7      Technical= 10      Tactical= 9      Speed of Play= 8</p>	
<p>4-4-2 (Entire Match)</p>		<p>RESTARTS (reverse side)</p>	

S.C.O.R.E. DEVELOPMENT SYSTEMS D.C. 2007



U.S. SOCCER FEDERATION

# TEAM TECHNICAL ANALYSIS...WHY?



- MATCH STRATEGY
- QUALITATIVE PERSPECTIVE
- QUANTITATIVE PERSPECTIVE
- TRAINING PLANS
- DELIBERATE PRACTICE
- TEAM REPORT



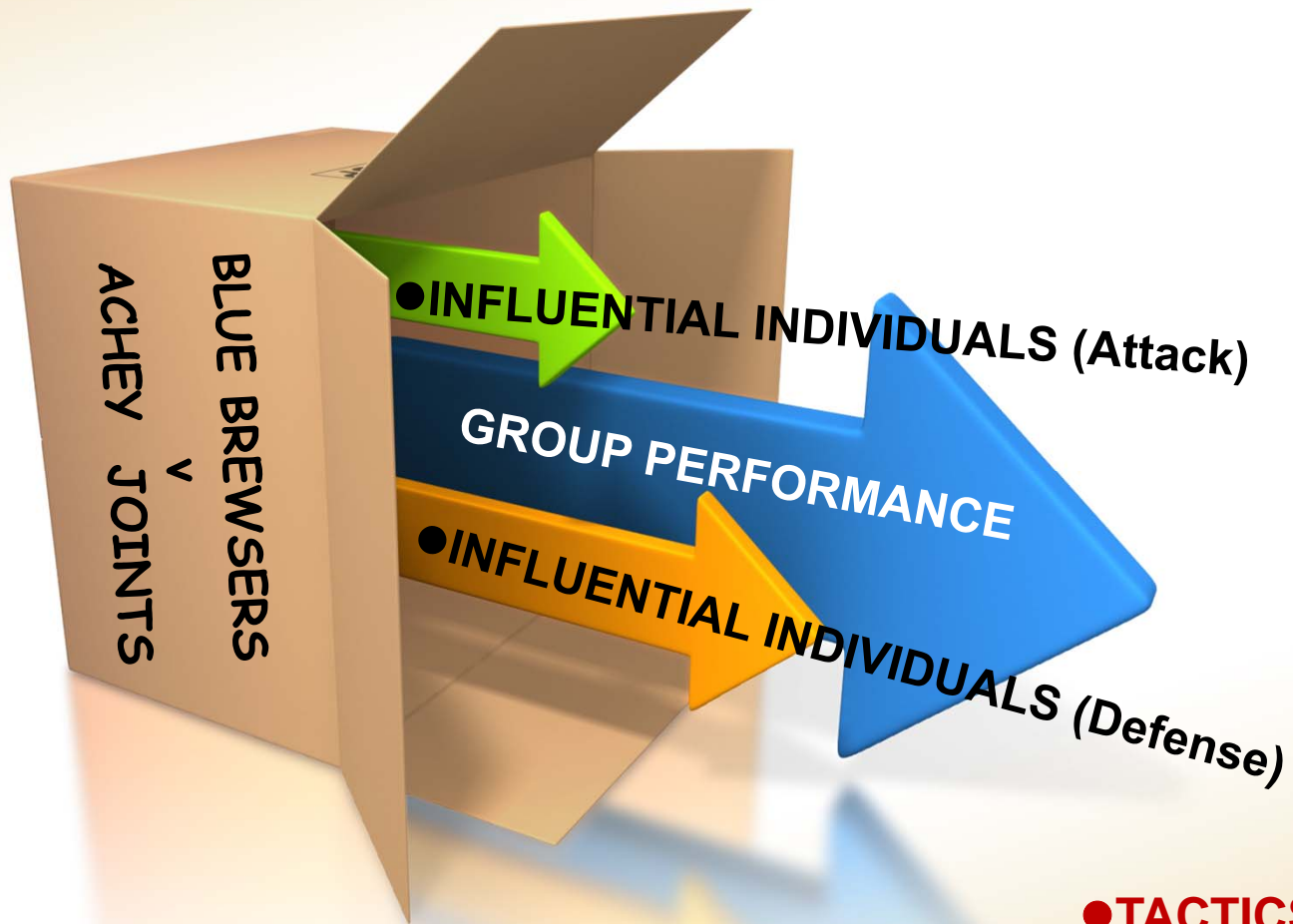
U.S. SOCCER FEDERATION

# TEAM TECHNICAL ANALYSIS...CONTENTS?





# TEAM TECHNICAL ANALYSIS...CONTENTS?



● SYSTEM    ● STYLE

● SUBSTITUTIONS

● STRATEGY

● MENTALITY

● PHYSICAL

● TACTICS / ROLES



# TARGET #2: PRINCIPLES







# TEAM TECHNICAL ANALYSIS...PRINCIPLES?

**3** *PRINCIPLES*



**#1 ESSENTIAL (Components)**

**#2 OBSERVATION  /  "FILTRATION"**

**#3 BALANCED (Perspective)**



## TEAM TECHNICAL ANALYSIS...PRINCIPLES?

### PRINCIPLE #1: ESSENTIAL qualities.

The first question....leads to superficial facts.

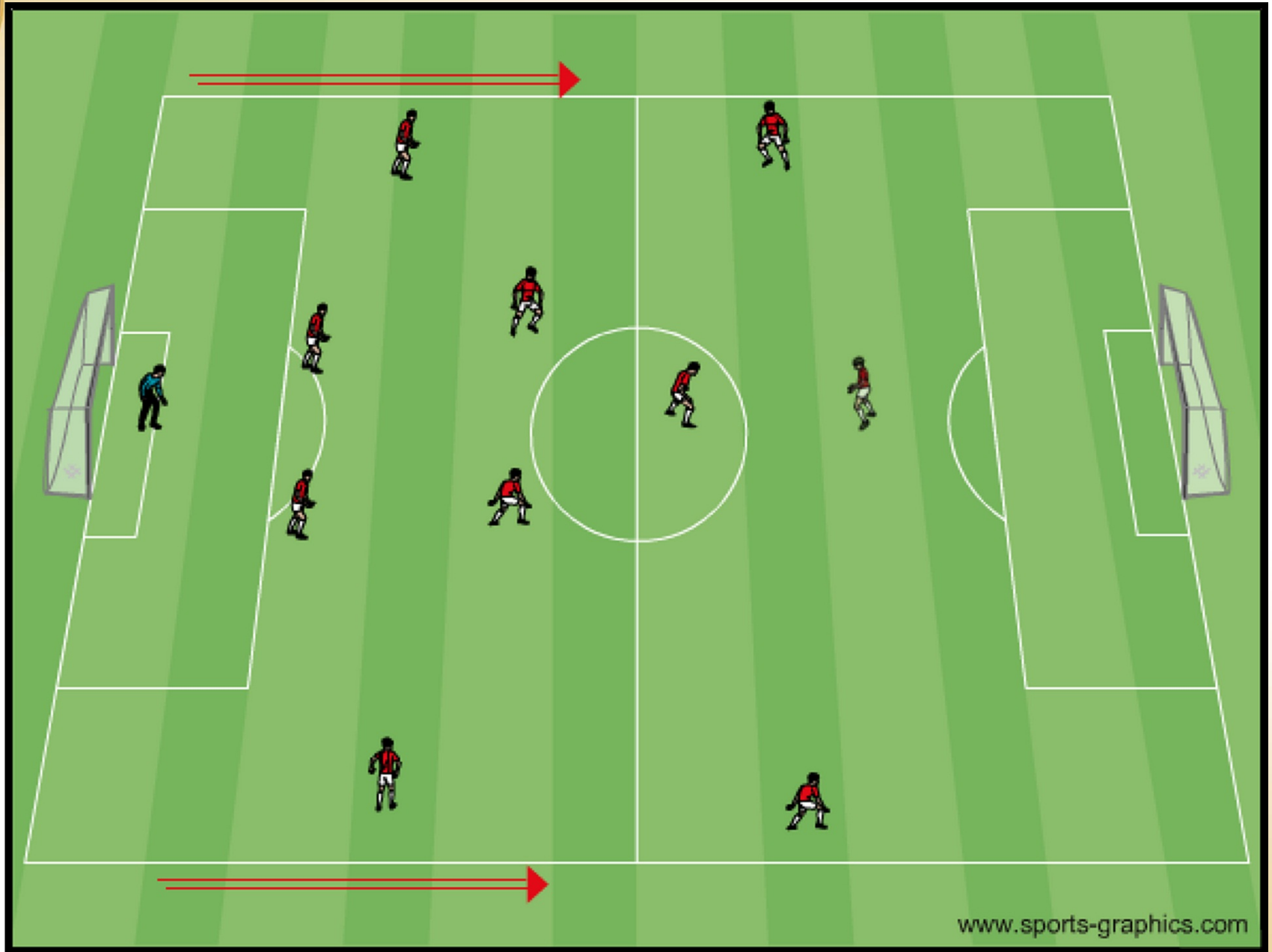
*(Ex.) What is the formation?*

An expert observer will always asks the “next” question, which then leads to the “next” question.....

*(Ex.) What are the roles within each line?*



U.S. SOCCER FEDERATION



[www.sports-graphics.com](http://www.sports-graphics.com)

USSOCCER.COM

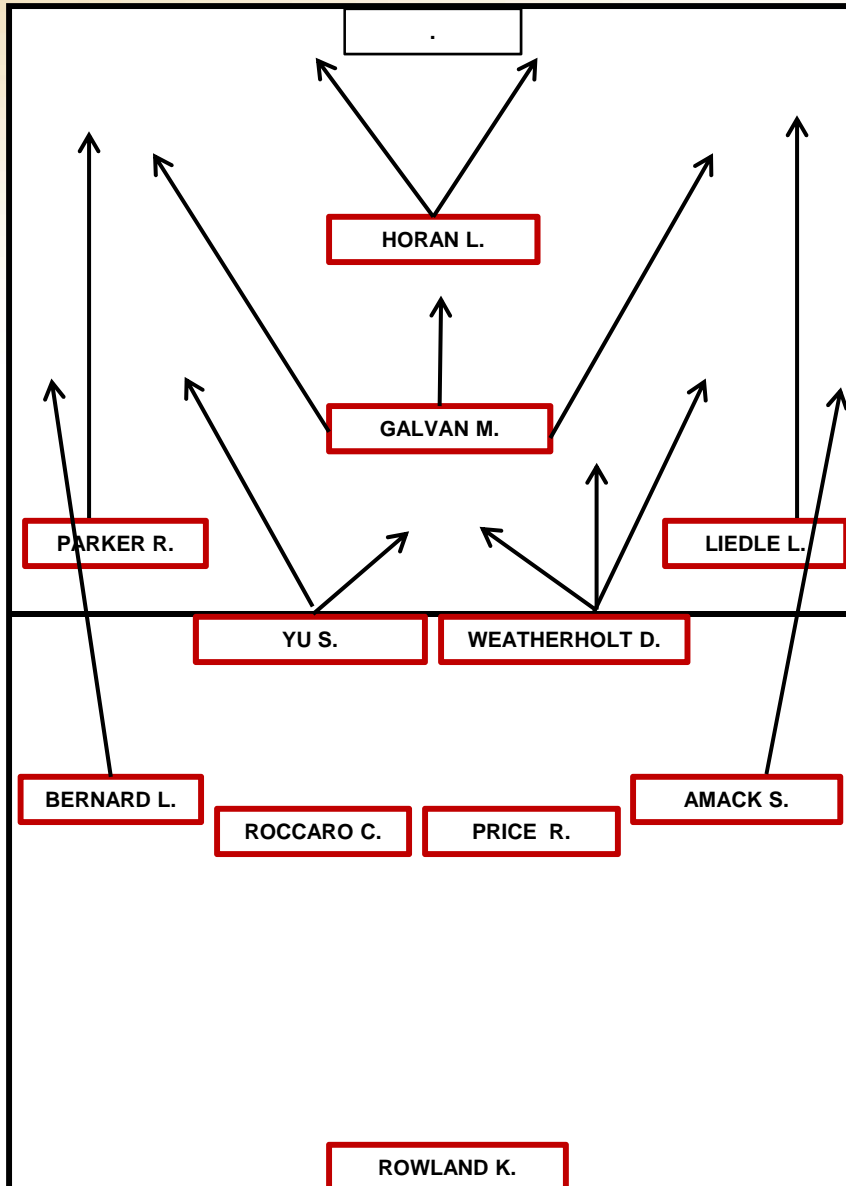


**MATCH ENVIRONMENT / EVENT:**  
**USA U18 WNT v. GERMANY '94**

**TECH STAFF:** Chesler, Gabarra

**DATE:** February 1, 2011

**TEAM:** U18 Women



**MATCH-PLAN**

**ATTACKING TARGETS:**

- (1) Utilize flank players to stretch opponent across the width.
- (2) Support underneath the player in possession with the intent to SERVE FORWARD, between defenders.
- (3) Flank midfielders move into aggressive, advanced starting positions as frequently as possible.

**DEFENDING TARGETS:**

- (1) Central Midfield Triangle must maintain a defending shape that eliminates central penetrating passes to the opponent's strikers. (primarily the holding pair)
- (2) Ambitious individual defending is a priority "CONFRONT-CHECK-CONTROL" Get into an aggressive start position & hunt to regain possession
- (3) Recognize opportunities for flank defender to step ahead of the off-side line. Recognize & COORDINATE when the flank defender should hold with the line.

**TRANSITION**

- (1) Urgency to recover to the line of confrontation on all opponent goal-kicks and punts. (LOC= +20 yds)
- (2) Urgency and effort in defensive recovery runs when the ball is served or carried past your position.
- (3) Urgency to physically and mentally prepare for assignments on defending re-starts.



U.S. SOCCER FEDERATION

# TEAM TECHNICAL ANALYSIS...PRINCIPLES?

**PRINCIPLE #2: OBSERVATION and recording.**





# TEAM TECHNICAL ANALYSIS...PRINCIPLES?

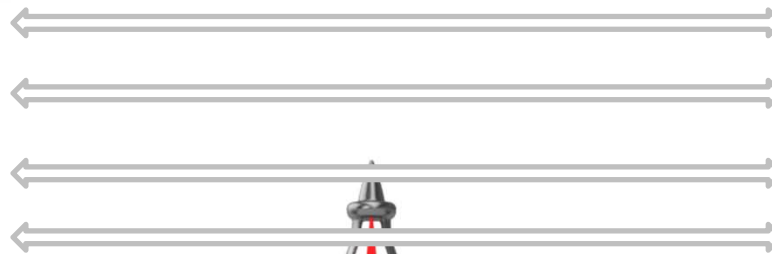
## PRINCIPLE #3: BALANCED perceptions?

**Isolated Event**

**Fact**

**Quantitative**

Individual



**Pattern**

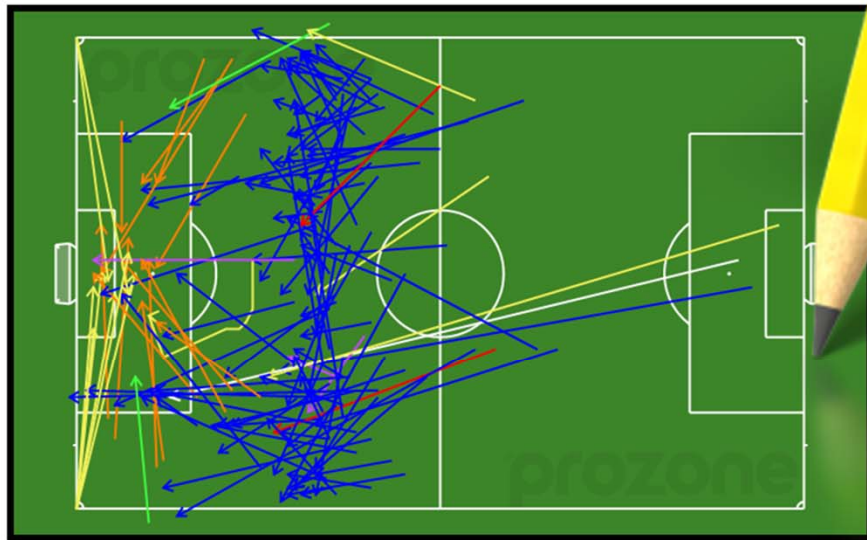
**Interpretation**

**Qualitative**

Collective Action



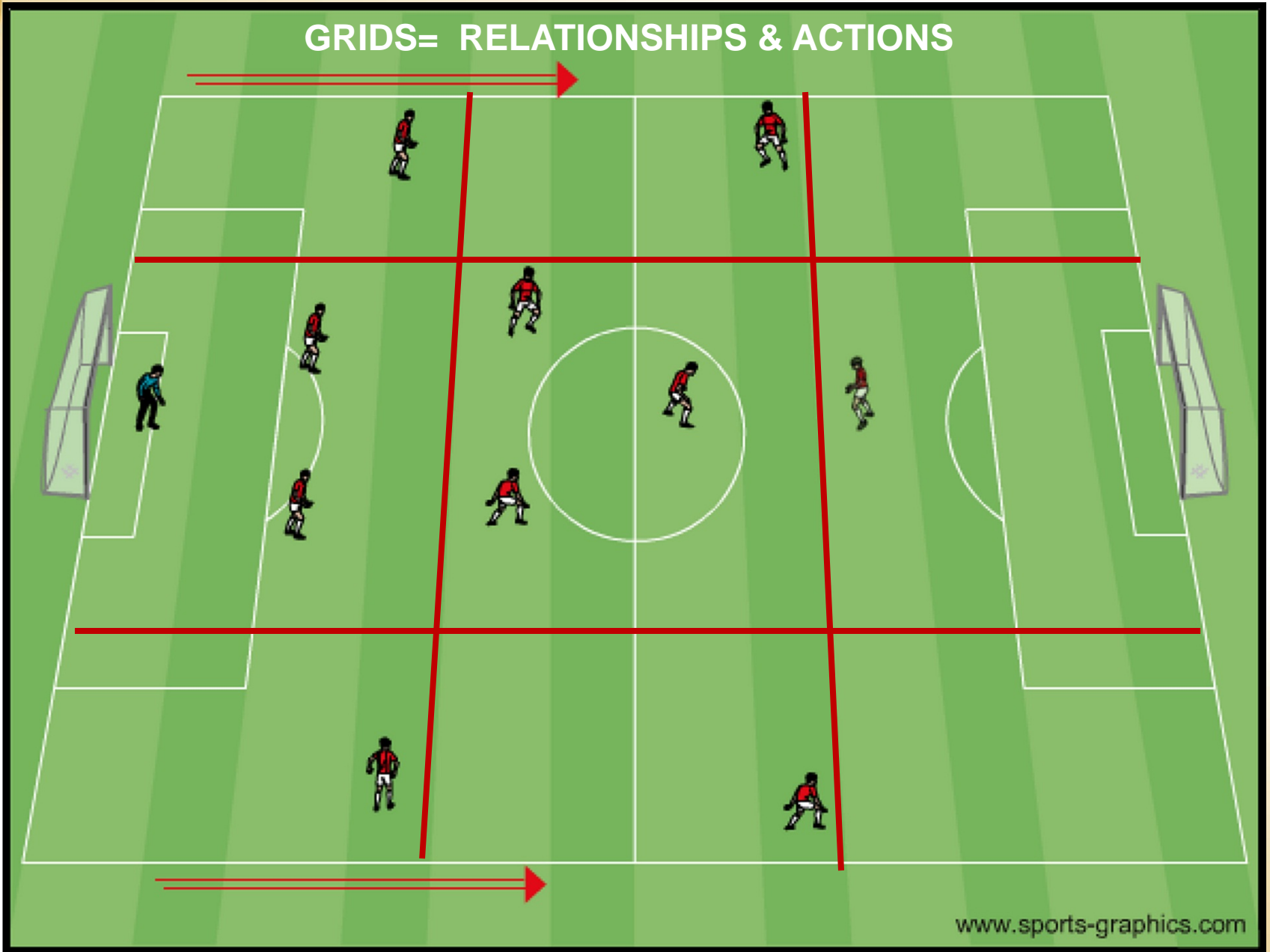
# TARGET #3: TECHNIQUES & TOOLS





U.S. SOCCER FEDERATION

## GRIDS= RELATIONSHIPS & ACTIONS



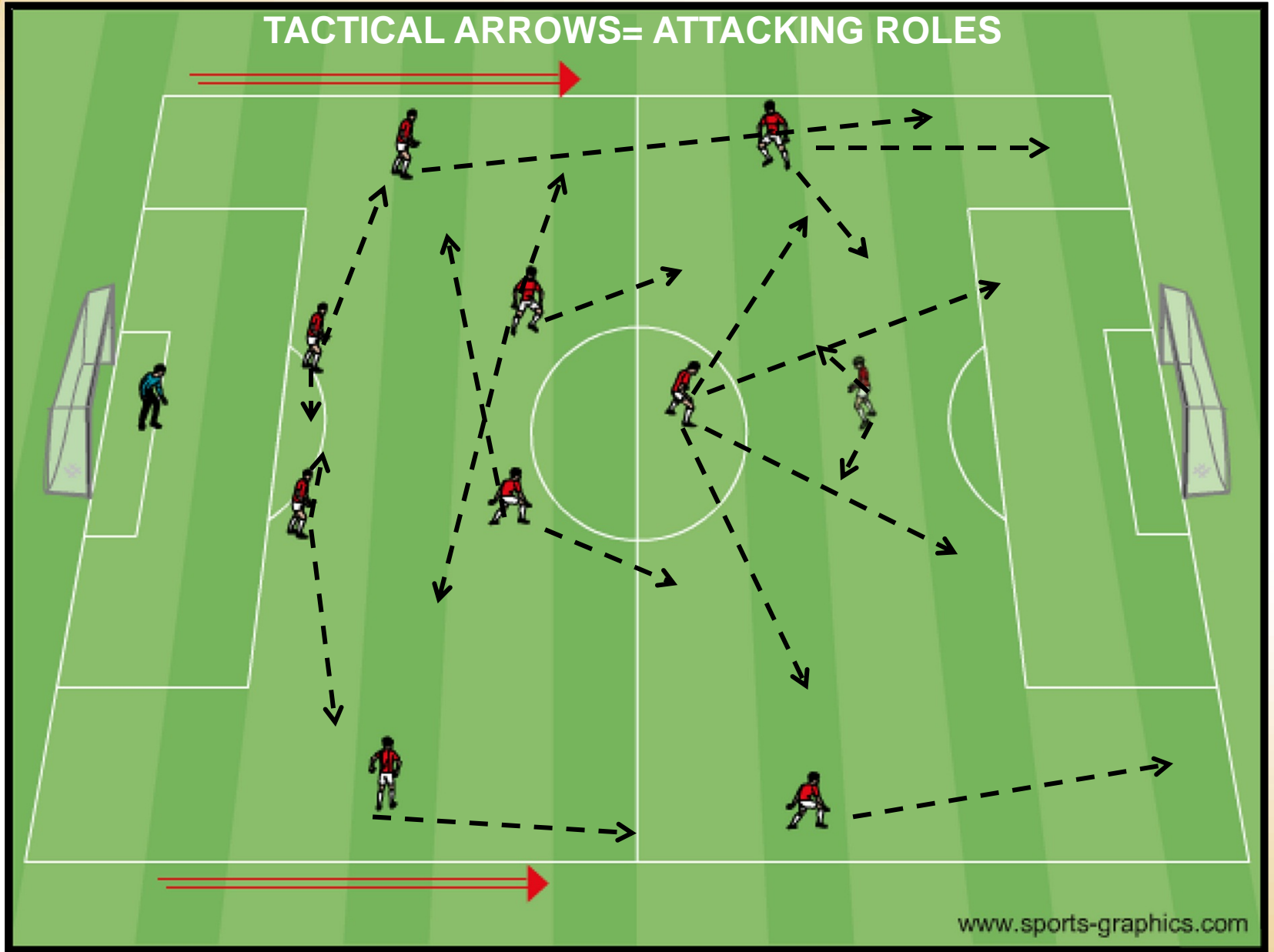
[www.sports-graphics.com](http://www.sports-graphics.com)

USSOCCER.COM





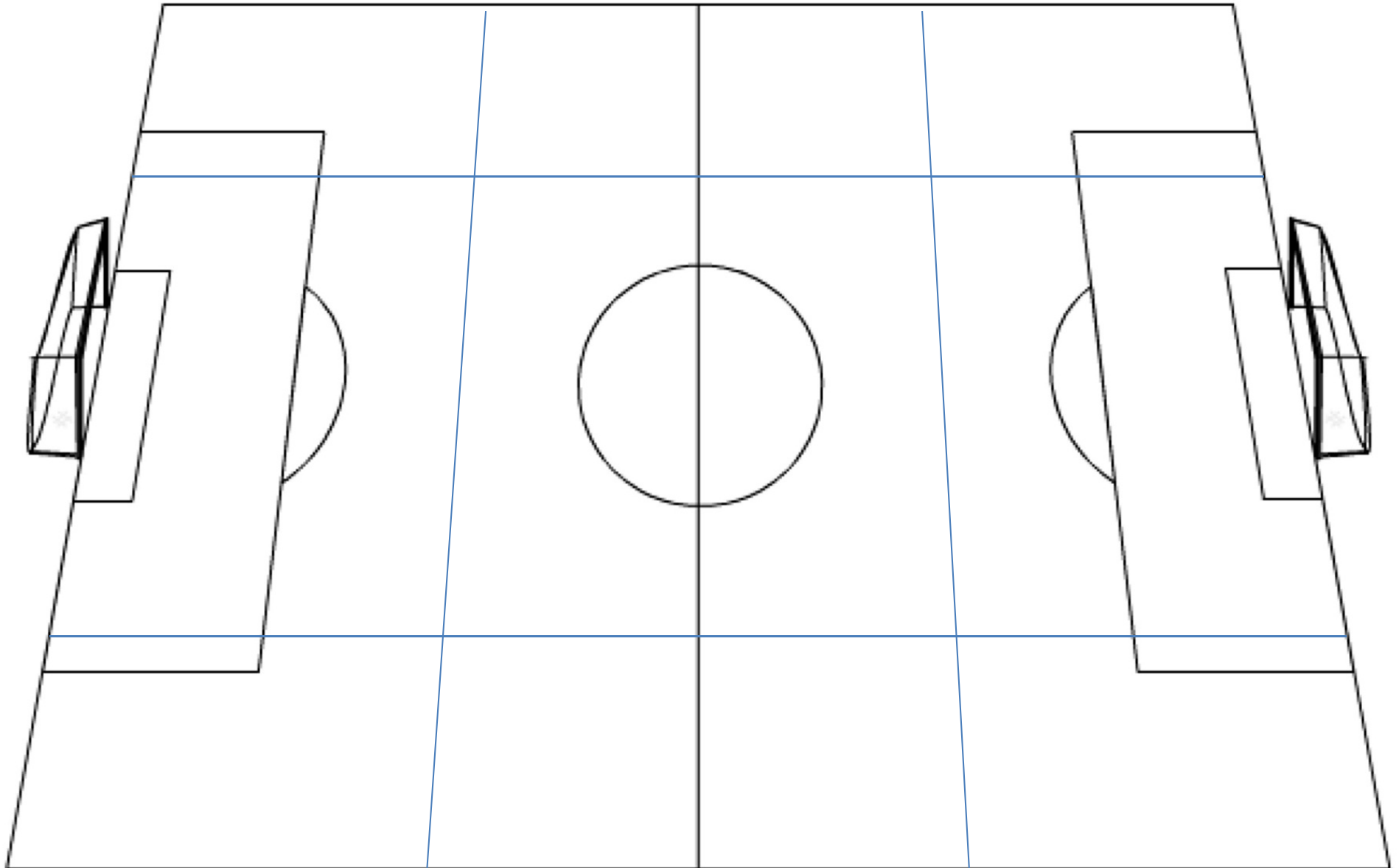
# TACTICAL ARROWS= ATTACKING ROLES



www.sports-graphics.com

**EVENT:**

**DATE:**

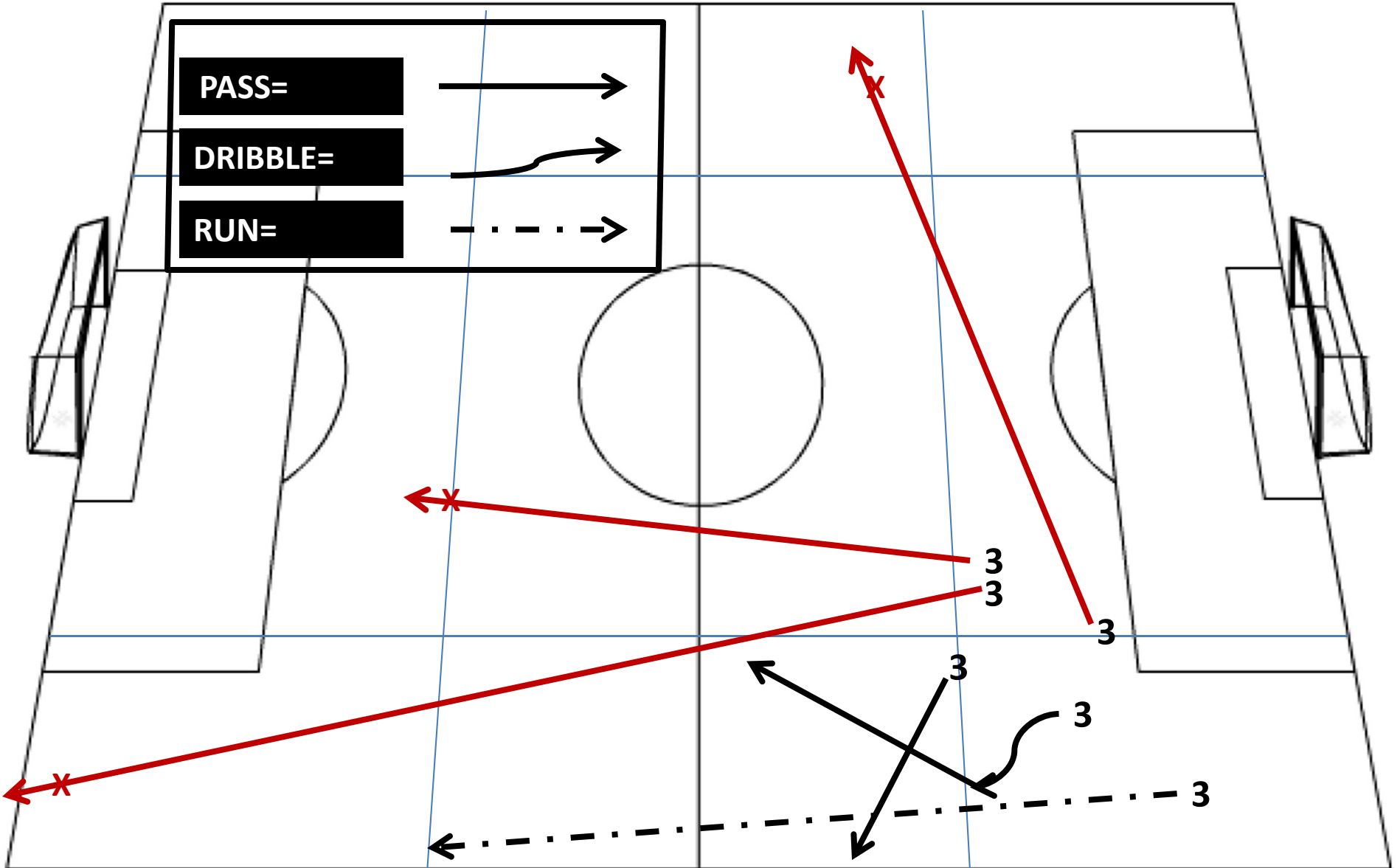


**START TIME:**

**END TIME:**

EVENT: Sample Tracking

DATE:



START TIME: 5' (1<sup>st</sup> Half)

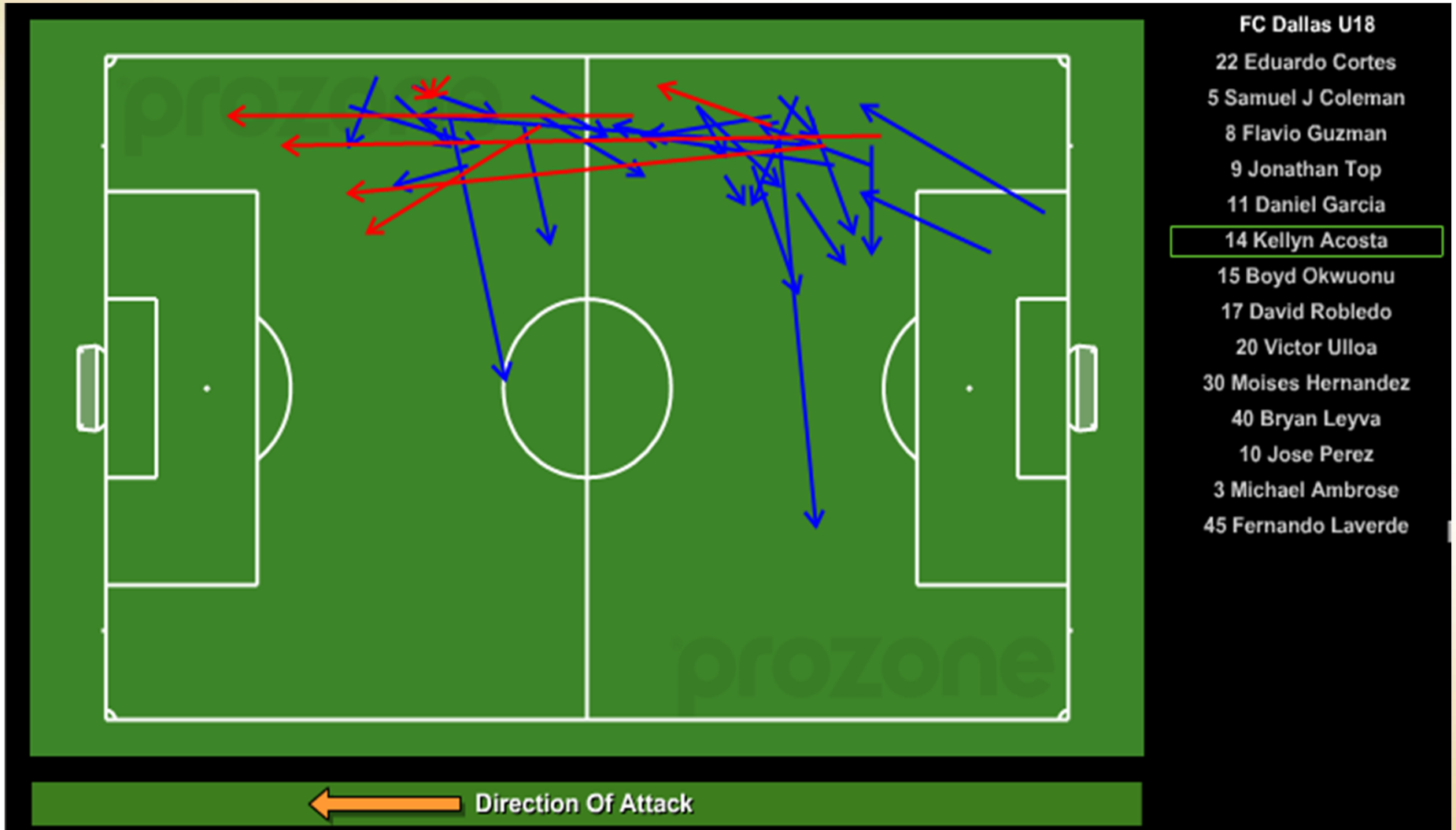
END TIME: 20'

# PRACTICAL APPLICATION (Deliberate Practice)



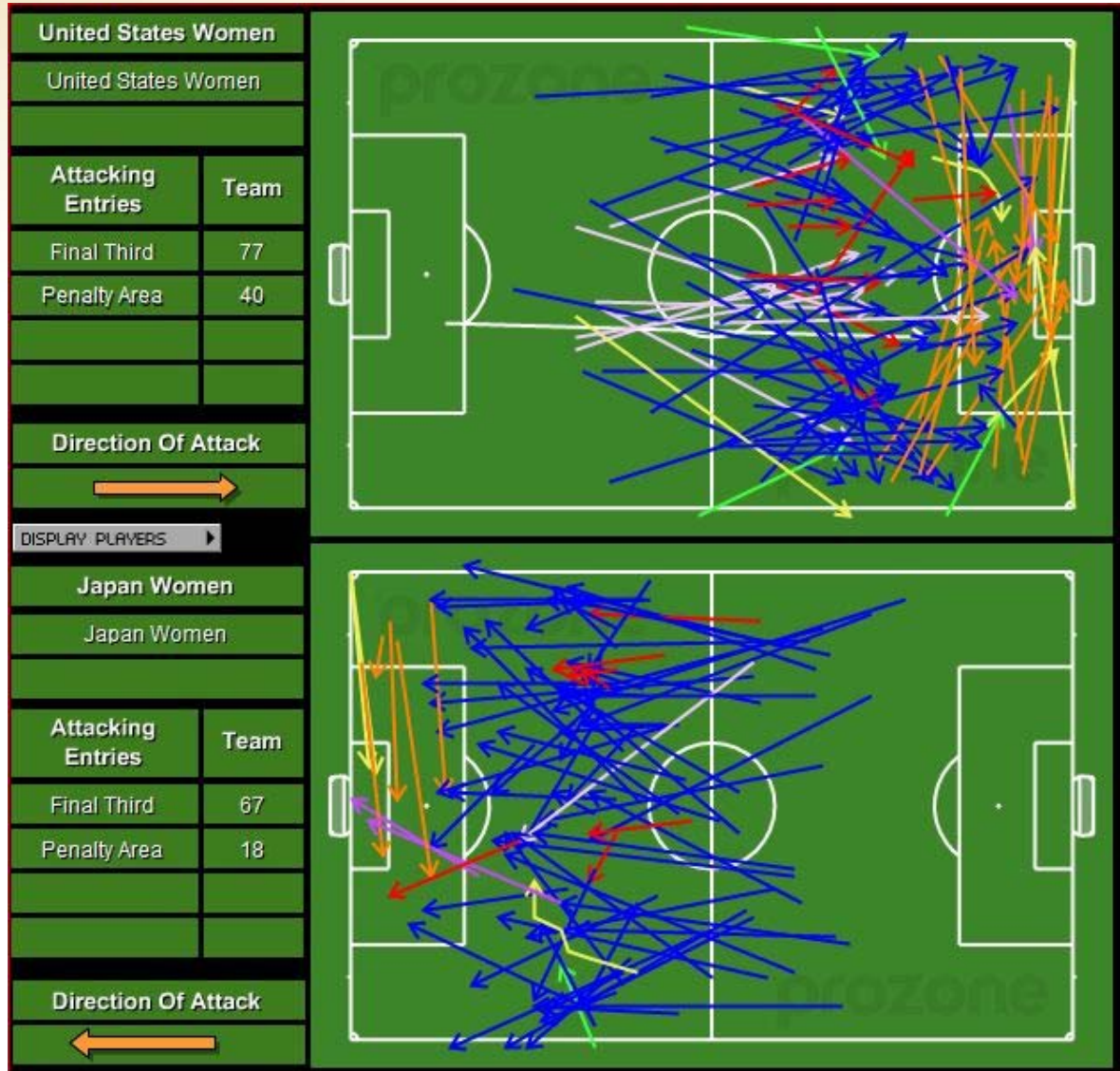


# INDIVIDUAL ANALYSIS....Right Fullback





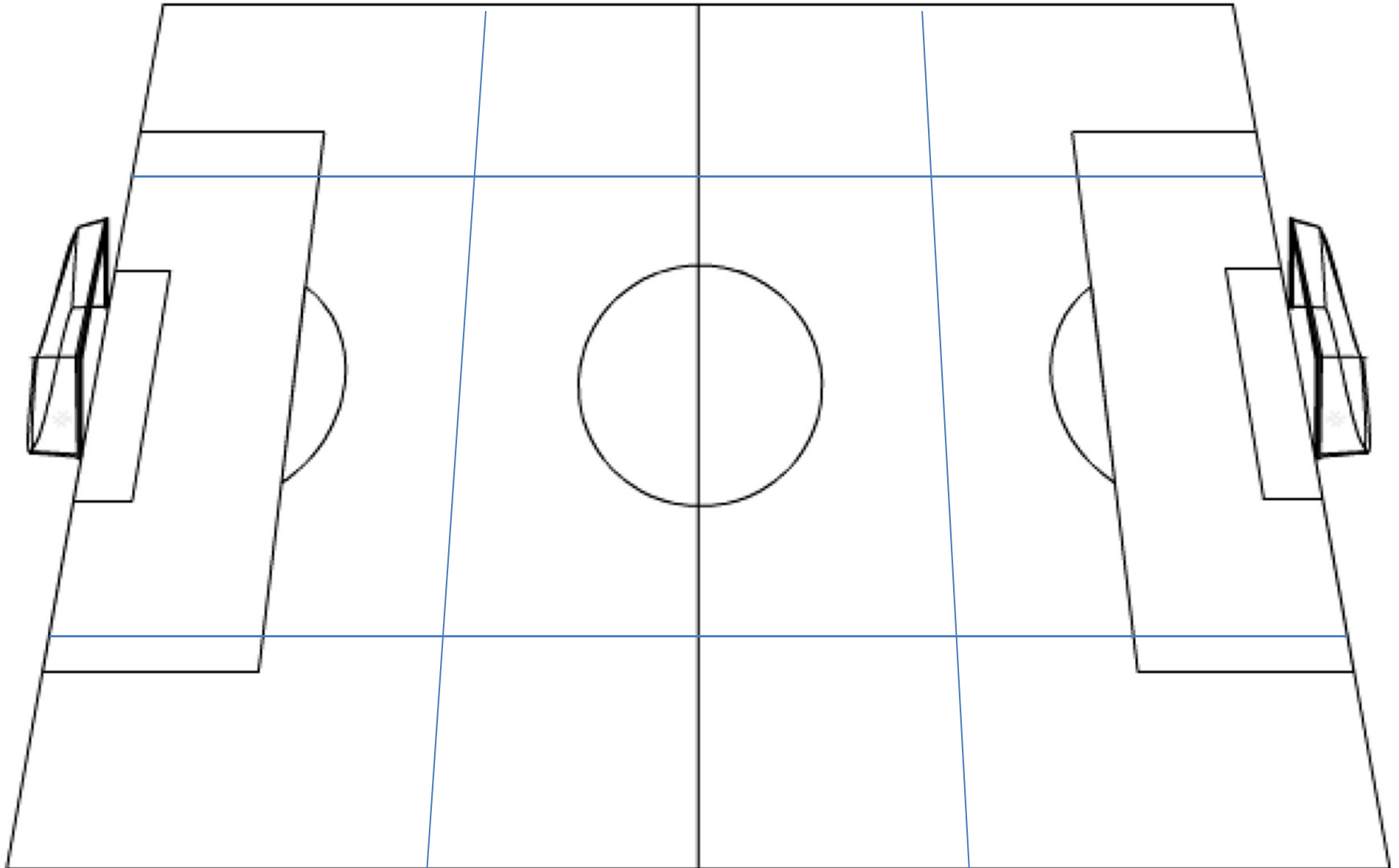
# GROUP ANALYSIS...attacking entries



Passes = Blue  
Throw-ins = Green  
Headers = Red  
Free Kicks = Purple / White  
Crosses = Orange  
Corners = Yellow  
Dribbles = Yellow (squiggly)

**EVENT:**

**DATE:**



**START TIME:**

**END TIME:**



U.S. SOCCER FEDERATION

